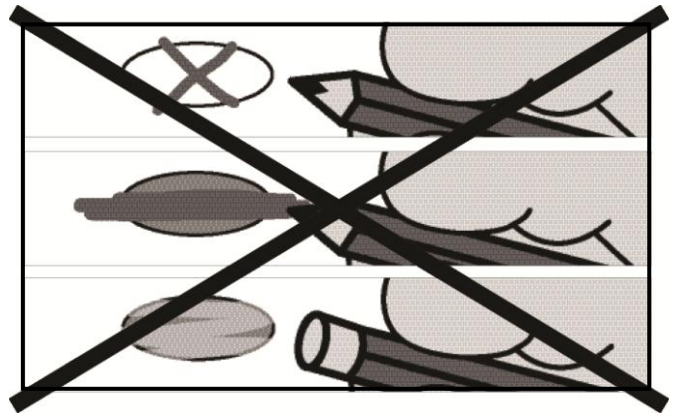
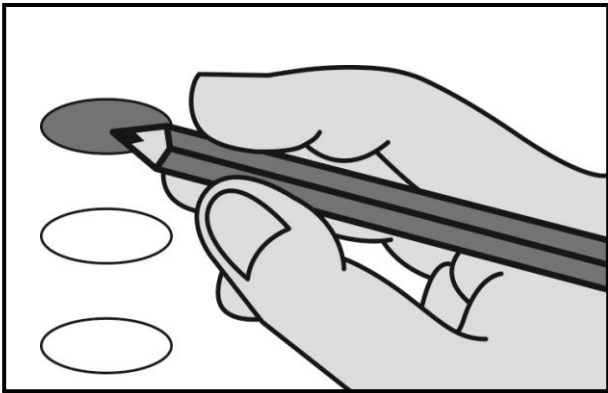


General Election Voting Instructions

Check in with the precinct election officials to obtain a ballot and ask them for assistance if you need help marking your ballot.

- 1. Go into a voting booth.**
- 2. Read and mark your ballot carefully.**

Fill in the oval completely next to your choice. Do not use an **X** or a **✓**. Ballots that are not marked correctly cannot be counted.



Each office title lists the number of candidates you may vote for. Do not mark more ovals than that number. You may choose to vote for fewer candidates, or you may skip any race.

If you mark too many ovals in a race, votes for that race cannot be counted. The other correctly marked races will be counted. Do not erase, cross out mistakes, or mark any mark that would identify your ballot later. If you make a mistake, do not cast the ballot. Ask a precinct election official for a new ballot.

If you mark a straight party vote and want to vote for a candidate from another party, fill in the oval next to the candidate's name. Your straight party vote will not count for that office. In offices where you can vote for more than one person, you may override your straight party vote by filling in the oval next to the names of the candidates you choose.

To cast a write-in vote for a person whose name is not on the ballot, write the name on the line below the candidates' names and fill in the oval in front of the name.

- 3. Review your ballot.**
- 4. Cast your ballot.**

Place your ballot in the secrecy folder and take it to the ballot scanner. Insert your ballot into the ballot scanner. If the ballot scanner rejects your ballot, notify a precinct election official.