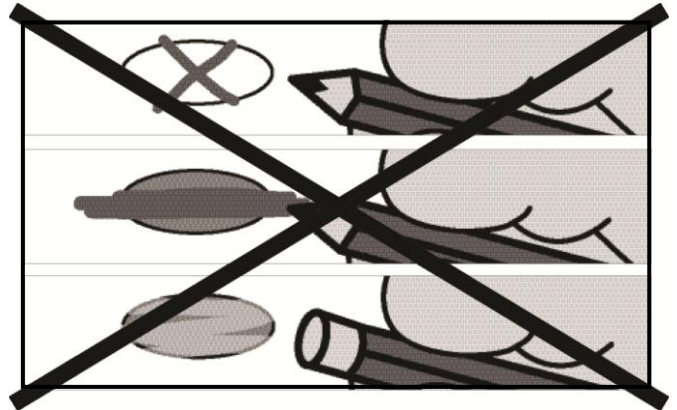
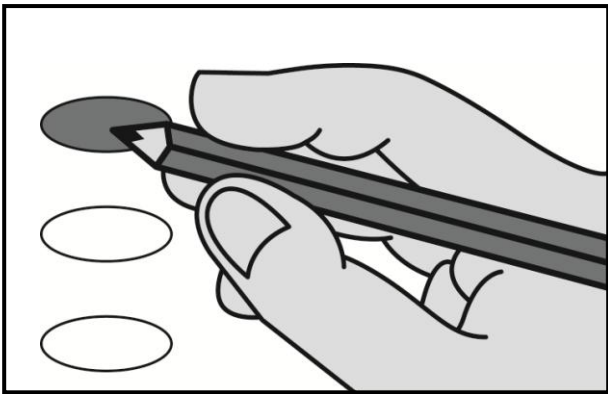


Voting Instructions

Check in with an election official to obtain a ballot and ask them for assistance if you need help marking your ballot.

- 1. Go into a voting booth.**
- 2. Read and mark your ballot carefully.**

Fill in the oval completely next to your choice. Do not use an **X** or a **✓**. Ballots that are not marked correctly cannot be counted.



Each office title lists the number of candidates you may vote for. Do not mark more ovals than that number. You may choose to vote for fewer candidates, or you may skip any race.

If you mark too many ovals in a race, votes for that race cannot be counted. The other correctly marked races will be counted. Do not erase, cross out mistakes, or make any mark that would identify your ballot later. If you make a mistake, ask a precinct election official for a new ballot.

To cast a write-in vote for a person whose name is not on the ballot, write the name on the line below the candidates' names and make the appropriate mark in front of the name.

- 3. Review your ballot.**
- 4. Cast your ballot.**

Fold your ballot so your votes are hidden and so the precinct election official's initials can be seen.

Give your ballot to a precinct election official. The official will put your ballot in the ballot box.